



\$797,327*



4 Bed



3 Living



2 Bath



2 Car

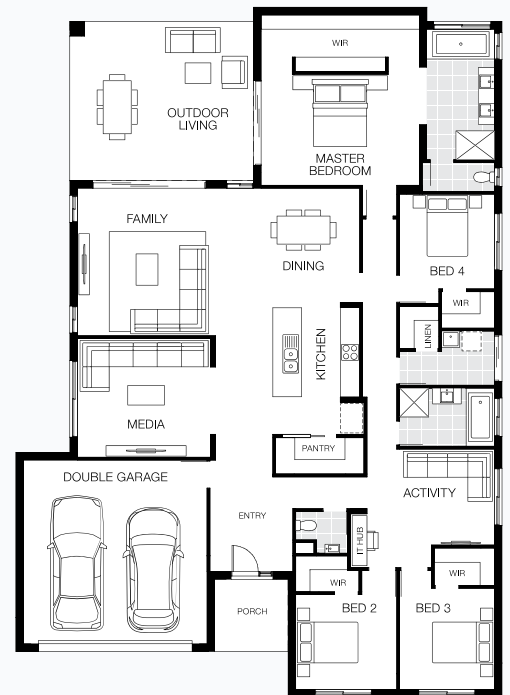
Lisbon 31 MKII - East Hamptons Facade

Lot 9 New Road, Nikenbah | Hervey Bay – The Springs Estate

Home Size: 292.24m² | Lot Size: 731.58m² | 23.448m x 31.2m Lot

Home and Land Package Inclusions

- Facade as shown
- Fixed site costs allowance
- Carpet and Tiling
- Panelift automatic garage door with 2 remotes
- Semi-frameless shower screen to bathroom and ensuite
- Stained timber feature front entry door
- Tiled Integrated slab to outdoor living area
- NBN Lead In
- 2550mm high ceilings
- Exposed aggregate driveway and path to entry
- 900mm stainless steel kitchen appliances



Marty Bamforth

New Home Consultant

📞 0448 488 374 ✉️ m.bamforth@coralhomes.com.au

Facade image may depict features such as landscaping, timber decking, furniture, window treatments and lighting which are not included in the package price or which are not available from Coral Homes. Floorplan is indicative only, conceptual in nature and subject to change. Floorplan may depict fixtures, fittings, features, finishes, inclusions, furnishings, vehicles and/or other products which are not included in the house design, not included in the package price and/or not available from Coral Homes. *Price shown is based on Coral homes Hervey Bay region price list dated 29-08-2022. Land price at the time of printing is \$350,000. Price shown does not include stamp duty, registration fees, additional amounts payable in respect of variations to the house design requested by the buyer or any other incidental fees associated with the acquisition of the land and home. Plan is subject to approval by the Principal Developer and Local Authorities. Additional costs may apply for bushfire, acoustics, N3, easements or additional covenant requirements and retaining walls. Coral Homes reserves the right to withdraw this package at any time, prior to entry into a contract, without notice. QBCC 50792/1014053, OFT NSW 62084C, BLD260339.